

# Community members, friends and family,

Grief's Journey's need for a new location is one of cause and opportunity.

Since 2011, Grief's Journey (formerly Ted E. Bear Hollow) has rented a 4,500 square-foot space from Children's Hospital & Medical Center (an invaluable friendship). Now, Children's is planning to expand, and our organization needs to find a permanent home.

Grief's Journey's need to relocate coincides with our need for more space and our desire to partner with others to provide better support for our clients and the community. **Our vision is to establish a collaborative campus – offering wrap-around support services for grievers, survivors, and caregivers. To our knowledge, this is a first-of-its-kind collaboration and co-location. Through this model, we will better serve our clients and strategically position our facility to evolve with our programming.**

After diligent exploration, our staff and board of directors have selected a location and put the wheels in motion toward one merger and multiple collaborations and co-locations.

Together, we're creating a unique community resource and regional hub dedicated to hope, healing, and professional education.

Physically, it will be . . . ***a retreat in the heart of the City.***

We're excited about journeying forward with you. We invite you to help us in our next evolution in serving the region. As always, we are grateful for your thoughtful and generous support.



**Rebecca Turner**  
CEO



**Wayne Young, Jr.**  
Board President



# Grief support shouldn't be a luxury.

Research indicates unaddressed grief correlates to issues such as poor school and work performance and emotional and behavioral concerns that may negatively impact self-sufficiency and wellness for individuals' lifetimes.

Outcomes measured at Grief's Journey indicate significant improvements in affect, behavior, hope, and perception of support, coping, and resilience.

The education and training Grief's Journey provides area professionals further increases our region's success at mitigating vulnerabilities and negative behaviors that are associated with and compounded by grief.

Grief's Journey believes everyone should have access to free, competent grief support and that our community is made more compassionate, stronger, and resilient as the result of it. To that end, the agency is steadfast in its commitment to improving and expanding its outreach and inclusion work. All services are designed to level the playing field, mitigate vulnerabilities, and foster positive outcomes for all who are grieving in the greater Omaha/Council Bluffs region.

Youth who experience unresolved childhood grief from the loss of a father are:

- **Five times** more likely to die by suicide (USDHHS, U.S. Census Bureau)
- **Twenty times** more likely to experience behavioral disorders (Center for Disease Control)

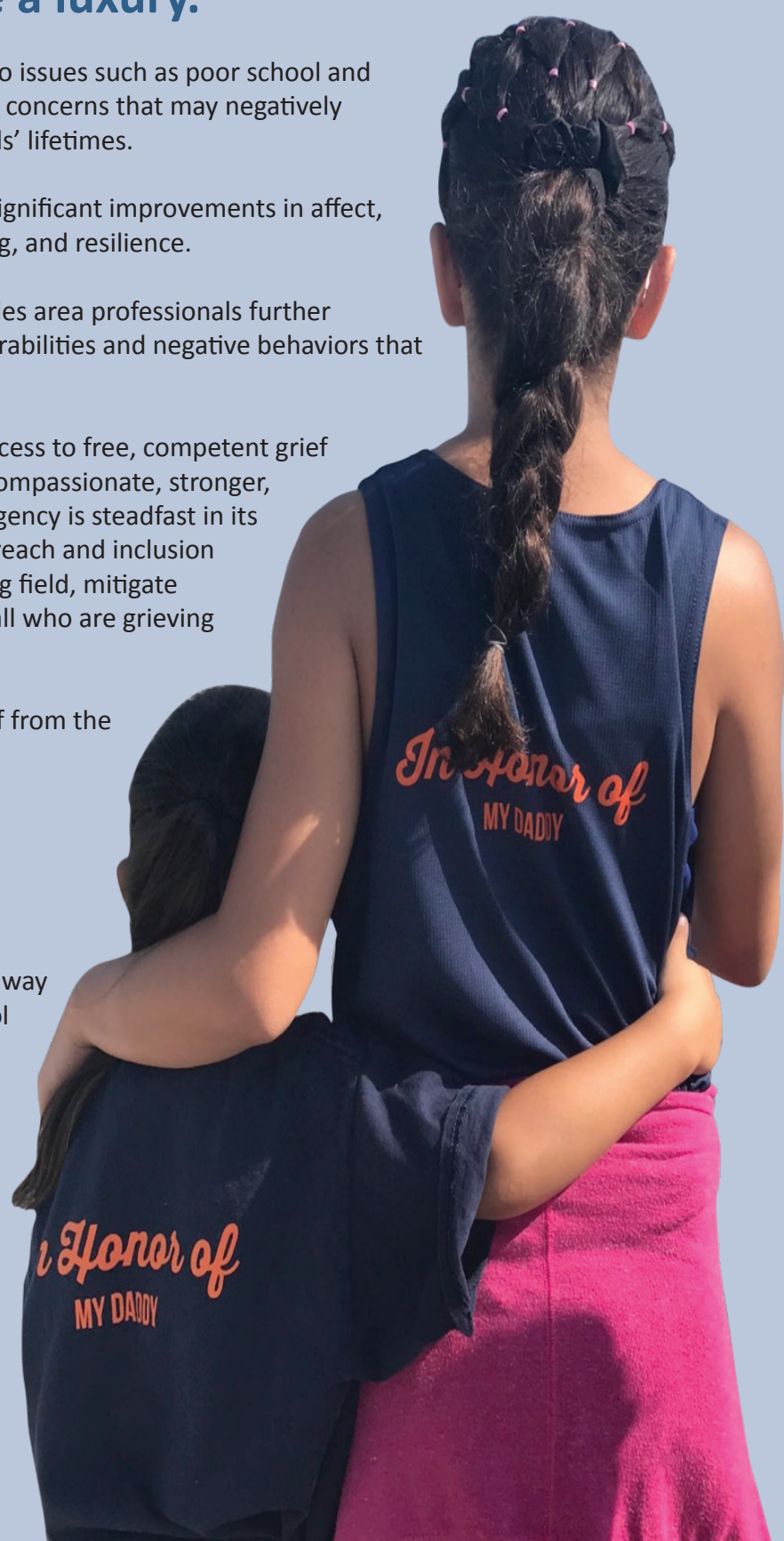
As a result of the death of a loved one:

- **20%** have hurt themselves physically in some way
- **45%** had more trouble concentrating in school

(New York Life Foundation, 2013 "The Grief Journey of a Child" from the perspective of youth responders)

Familial separation resulting from immigration challenges yields:

- More children in child welfare system
- Increased absenteeism in schools
- Families cancelling food assistance



## Grief's Journey Timeline

**2001**

Ted E. Bear Hollow is officially incorporated as a nonprofit, hosts first support groups.

**2005**

Ted E. Bear Hollow hires first Executive Director, Nancy Hemesath.

**2007**

Ted E. Bear Hollow produces backpack program with Omaha Public Library; launches Camp Hope, an overnight retreat for grieving teens.

**2008**

Ted E. Bear Hollow moves to fourth location, and begins to offer support groups year-round.

**2009**

Organization adds adult programs.

**2011**

Ted E. Bear Hollow moves into fifth and current facility.

# Prevalence & Impact

## Our region is underserved:

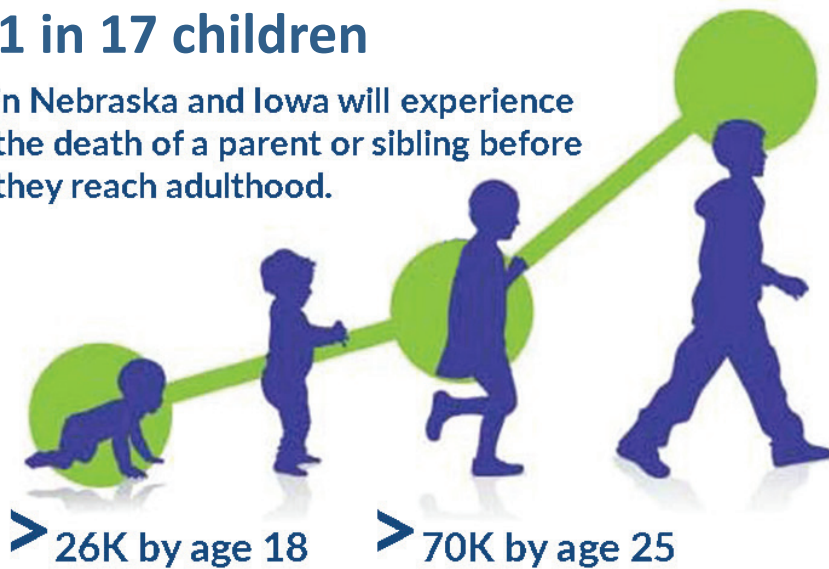
- With the vision that no one has to grieve alone, Grief’s Journey and partners will be the only non-profit organization in the region providing free grief support programs designed for people of all ages and walks of life.
- Grief’s Journey is the only organization in Nebraska/Western Iowa providing grief support outside of the Omaha and Lincoln metropolitan areas, prioritizing outreach efforts in both urban and rural settings.
- Professionals sometimes drive hours to attend Grief’s Journey training in order to learn how to design and implement services in their home communities.



\*Agencies providing free grief support.  
● Grief’s Journey

## 1 in 17 children

in Nebraska and Iowa will experience the death of a parent or sibling before they reach adulthood.



Judi’s House/JAG Institute

*“Grief’s Journey is an important resource in our community that works tirelessly to assist children and adults with traumatic issues that hamper their well being.*

*We are particularly grateful to have them as a partner as they work with children in our District. The nature of this project is a great next step to address the need for increased services in our region.”*

— Toba Cohen-Dunning  
Executive Director,  
Omaha Public Schools Foundation  
National Schools Foundation  
Association Board President

## 1 in 4 employees is grieving at any time

- **30 work days** are lost per year by each employee coping without support from co-workers or managers.
- **20%** of grieving employees will continue losing work days for more than one year.
- **\$125,000** is the average annual cost, in lost productivity, to an organization of 400 employees.

*(Grief Recovery Institute)*

### April 2013

Ted E. Bear Hollow hires Executive Director, Rebecca Turner; expands outreach & inclusion work.

### November 2014

Ted E. Bear Hollow hosts inaugural Grief Awareness Conference.

### 2015

Ted E. Bear Hollow is named the official Mustaches 4 Kids (Omaha Chapter) Charity partner.

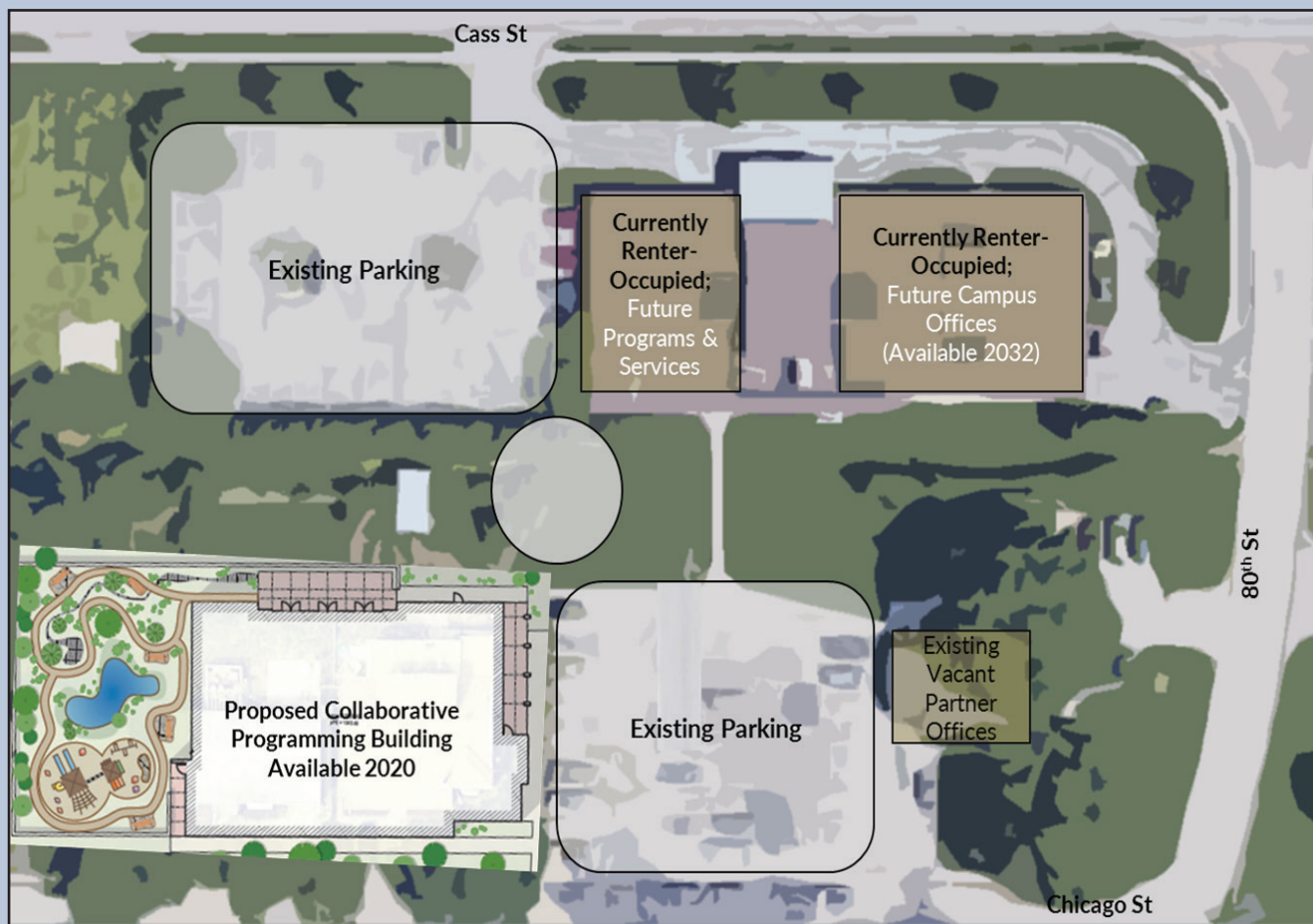
### 2016

Ted E. Bear Hollow expands programs for causes of grief beyond bereavement.

### 2017

Ted E. Bear Hollow changes name to Grief’s Journey to reflect and include older youth and adult programming.

# Collaborative Campus Connects Complementary Services



Help establish this innovative campus that partners organizations dedicated to addressing intersecting issues of grief, mental health/wellness, and human services.

The tranquil 1.28-acre site is conveniently located in central Omaha near 78th and Dodge. The total property includes a 10,076-sq.-ft. commercial building (tenant occupied for 12 years), a smaller building that has been reserved for offices for collaborating organizations, and three rental homes (unoccupied and slated for demolition). The three unoccupied homes are the site for the new construction, a collaborative programming building.

The collaborative programming building, a proposed 7,600 sq. ft., will be a shared space where multiple client and professional education services are provided. This building is designed specifically to serve grieving children, families, and adults. The new space is meant to be a peaceful, relaxing atmosphere that encourages respite while providing quality service, care, and programming for clients, caregivers, and professional providers.

## Campus Timeline

### 2019

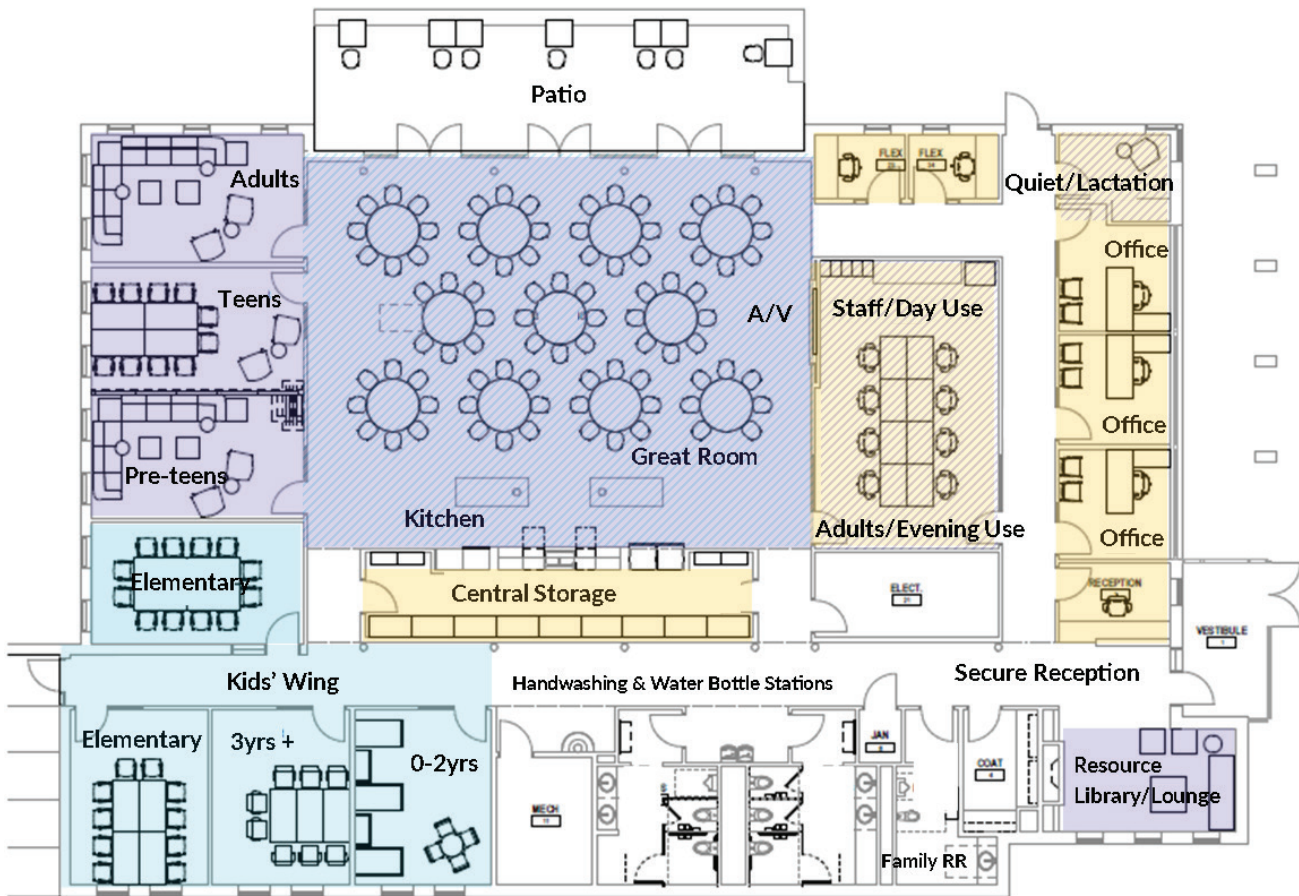
Grief's Journey purchases new campus property; merges with first campus partner. Community fundraising begins; groundbreaking slated for new facility.

### 2020

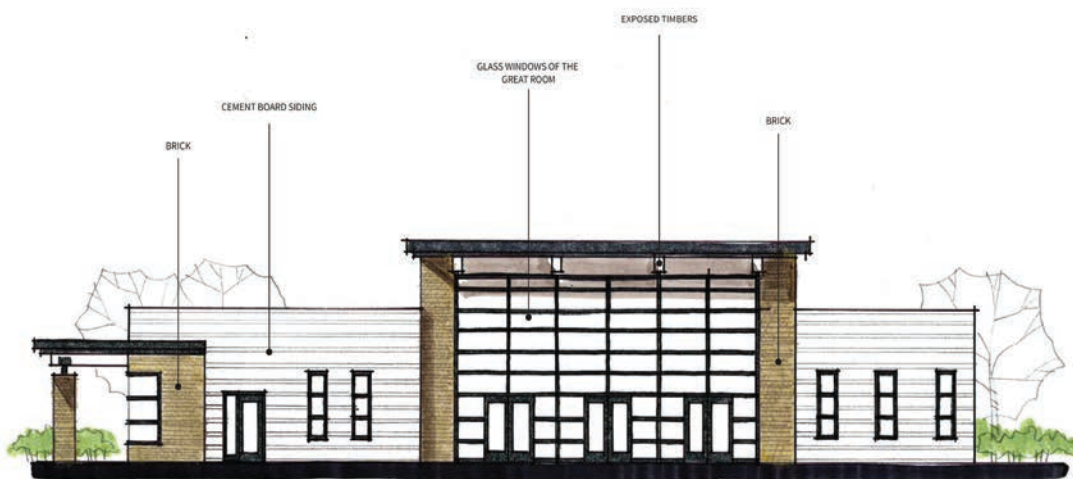
New campus building is complete; Grief's Journey and partners move in! Outdoor space, community room and library lounge are community resources and retreat spaces.

# New Construction

## Programming Building for Shared Use on Collaborative Campus



## North Elevation



### 2021-2025

Grief's Journey expands collaborations; utilizes additional space to offer daytime programs, training, and education offerings.

### 2026-2030

Grief's Journey expands service lines and products; prepares to move staff to formerly rented campus space, freeing up new building for additional programs.

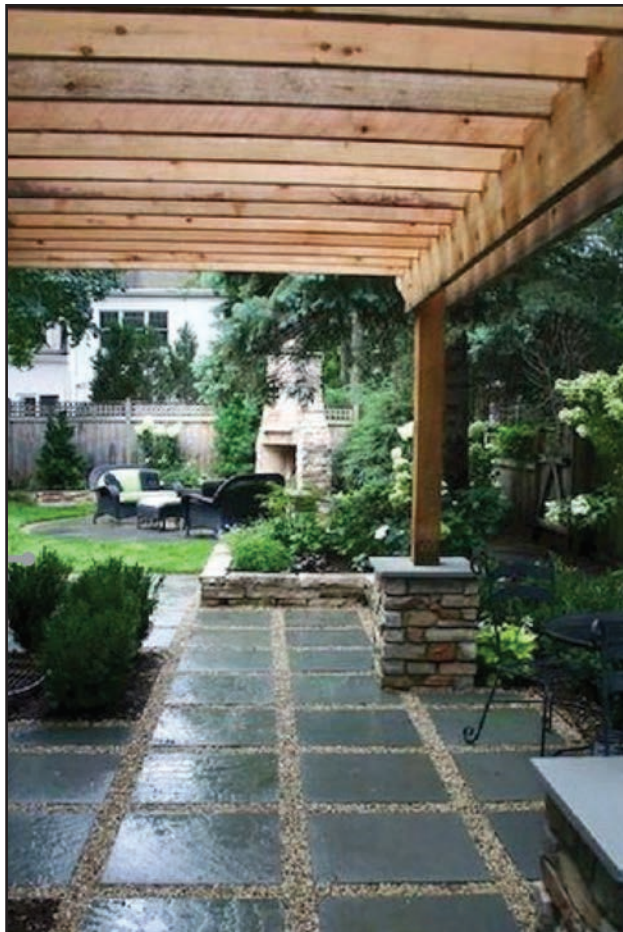
### 2032

Grief's Journey launches new wellness programs/resources in newly available campus space.

## Benefits to Omaha/Council Bluffs Region and Beyond

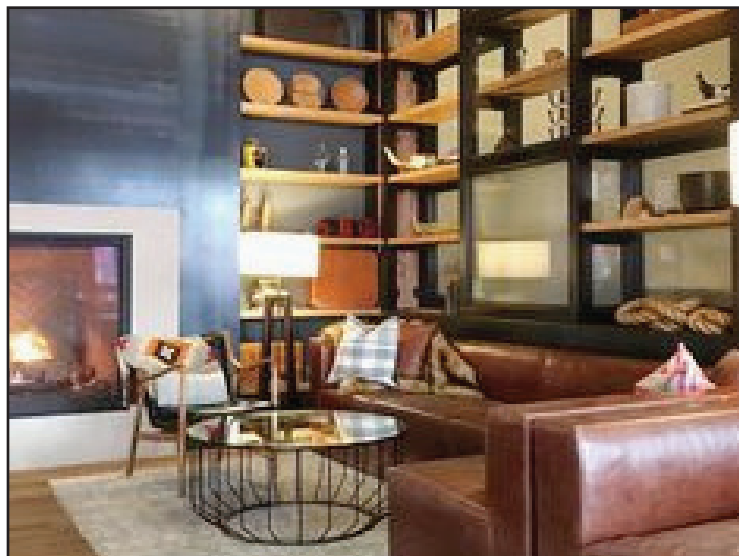
- The collaborative campus will serve as a retreat center and hub for training and support programs in the heart of the city, one centrally located and with access by bus line. The new facility will also be ADA compliant with enhanced accessibility features. Clients will benefit from the co-location of other organizations and services, leading to increased continuity of support and reduced barriers to access.
- Through the new campus, Grief's Journey hopes to yield stronger, more sustainable programs while creating greater community awareness of the importance of addressing grief and survivorship as public health issues.
- The new Programming Building, shown on the previous page, is designed for day and evening use by Grief's Journey and a variety of different programs and community partners. The facility features wings designated for different age groups, including a "Ted E. Bear Hollow" kids' zone!, and a relaxing library lounge meant to invite community members and program participants to utilize the space on their own time as needed.
- The Community Room, depicted below, will be used as a training space, programming space, and community gathering/dining space. It is planned to accommodate up to 120 people and will be equipped with appropriate technology to conduct trainings for constituents such as school counselors, hospital workers, and volunteers.





## Additional Campus Benefits:

- A modern facility built for work with different ages, abilities and styles of addressing grief
- Secluded, comfortable outdoor space, including a healing garden and play area for programmatic activities
- Improved economies of scale for Grief's Journey and partner organizations
- Shared overhead yielding stronger, more sustainable programs
- Improved sight-lines and ease of access to new resources for program participants
- Room to innovate and expand over time
- Financial risk mitigated by rent from existing commercial tenants
- Childcare space for children under 2 who accompany adults and families with children ages 3 plus
- A dedicated meditation/lactation room
- Additional rooms to host new programs and concurrent support groups
- A larger community room to host trainings and special events
- A more comprehensive library and dedicated reception/lounge area for public use throughout the day
- Appropriate office space for staff
- Workroom for staff and volunteers
- Drop zones for volunteers/clients



# Please Give Generously

## PLEDGE

Complete the enclosed Letter of Intent to make a pledge of up to three years.

## IN PERSON

Call 402-502-2773, and we'll set up an appointment or schedule a tour!

## MAIL

Grief's Journey  
7811 Farnam Drive  
Omaha, NE 68114

## ONLINE

Visit [griefsjourney.org](http://griefsjourney.org) to make a one-time gift or set up monthly giving.

## Fundraising Goal

Through hard work from the Board and CEO, Grief's Journey has been able to secure a campus that will generate 12 years of reliable rental income that will lower the philanthropic dollars needed to make the campus a success and the growing programs sustainable.

The cost of purchasing this valuable Omaha property, nearly \$3 million dollars, has already been secured thanks to guaranteed lease income and more than \$750,000 in philanthropic donations. Grief's Journey is also proud to share that only 2% of the project budget is in administrative cost.



Your donation to Grief's Journey's new Collaborative Campus will support the new program building and new construction costs. Please consider a naming opportunity, so we can recognize your gift publicly!

Category	Budget
Land Acquisition (Committed)*	\$2,970,000
New Construction	\$1,880,000
Maintenance & Operations	\$1,000,000
Contingency	\$200,000
Administration/Legal	\$142,000
<b>Project Total</b>	<b>\$6,192,000</b>

\* Land Acquisition has already been funded through lease income and \$757,500 in philanthropic donations



Hundreds participate in Annual Remembrance Walk.